

Description

XL48-8



XL48-11



ZN48



ZN4896



ZN72

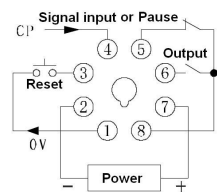


Specification

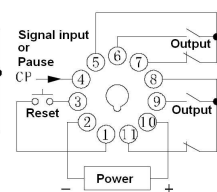
Model	XL48-8	XL48-11	ZN48	ZN72	ZN4896
Rated Supply Voltage	AC24V, AC110V, AC220V, AC380V 50/60Hz, DC24V				
Operating Voltage Range	85% to 110% of rated supply voltage				
External Power Supply	DC12V 30mA(Max.)				
Memory Protection	10 years				
Mechanical Life	300000 operations min.				
Electrical Life	100000 operations min. (5 A at 250 VAC/30 VDC, resistive load)				
Contact Form	1NO+1NC				
Rated Load of the Contact	5A AC220V(Resistive)				
Dimension(mm)	48×48×115mm	48×48×115mm	48×48×90mm	72×72×81mm	48×96×114mm
Mounting(mm)	45×45mm	45×45mm	45×45mm	68×68mm	45×92mm
Installation	Flush mounting and 35mm DIN rail				

Wiring Diagram

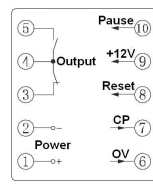
XL48-8



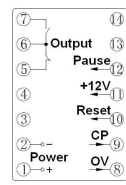
XL48-11



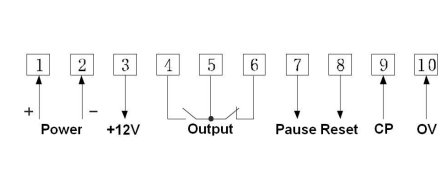
ZN48



ZN72

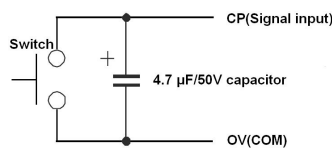


ZN4896

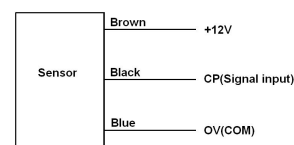


Input Signals

Contact signal counting



PNP transistor and NPN transistor

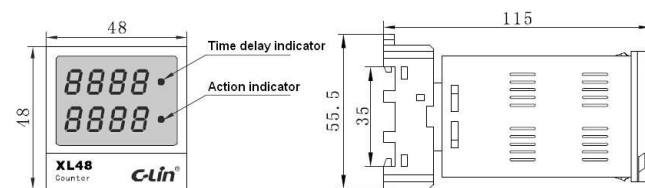


Note 1: For counter the DC6~36V PNP NO type Photoelectric switch or Proximity switch is preferred.

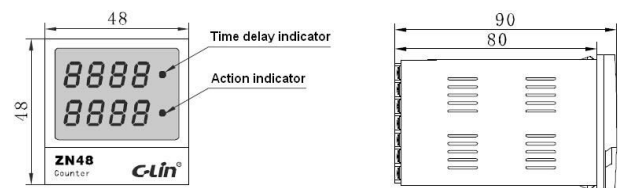
Note 2: If the input signal is contact signal, please connect 4.7 μ F capacitor between CP signal and OV.

Dimension(mm) and Mounting(mm)

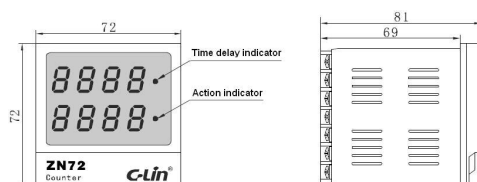
XL48(Mounting: 45mm*45mm or 35mm DIN rail)



ZN48(Mounting: 45mm*45mm)



ZN72(Mounting: 67.5mm*67.5mm)



ZN4896(Mounting: 45mm*92mm)

