

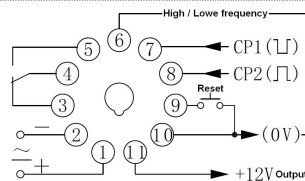
Description



Specification

Rated Supply Voltage	AC24V, 36V, 110V, 220V, 380V 50/60Hz, DC24V(85% to 110% of rated supply voltage)
Input Modes	Increment, Decrement
Counting Speed	Low frequency: 25 times/s, High frequency: 25~250 times/s
Counting range	1~9999
Input Signals	Contact signal(Contact and Limit switch) Pulse level signal(H: DC4~30V, L: 0V~DC2V) Sensor signal(NPN, PNP, Hall)
Output Modes	N, F, R
Reset	Button switch and connect terminal 9 and 10
Memory Protection	10 years
Mechanical Life	100000 operations min.
Electrical Life	100000 operations min. (5 A at 250 VAC/30 VDC, resistive load)
Rated Load of the Contact	5A AC220V(Resistive)
Installation	Flush mounting and 35mm DIN rail

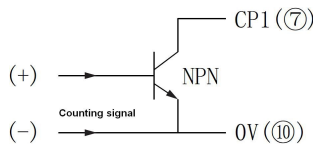
Wiring Diagram and Dimension(mm)



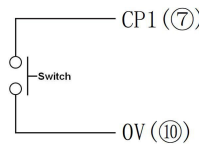
Input Signals

CP1

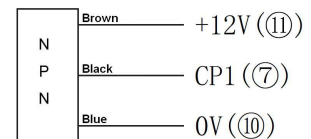
Pulse level signal counting



Contact signal counting

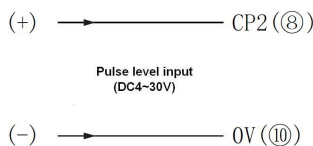


NPN transistor

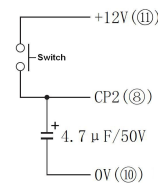


CP2

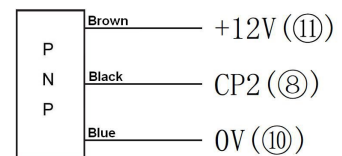
Pulse level signal counting



Contact signal counting



PNP transistor

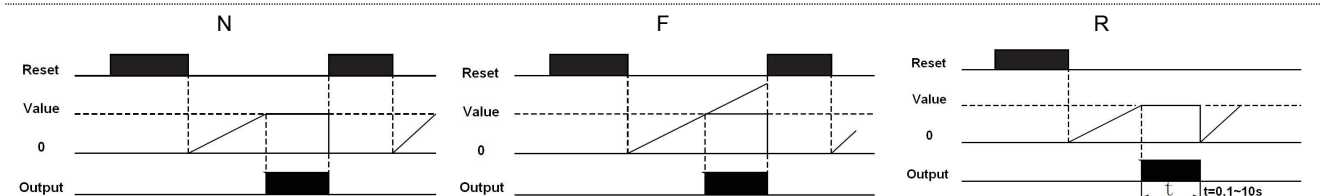


Note 1: For counter the DC6~36V PNP NO type Photoelectric switch or Proximity switch is preferred.

Note 2: If the input signal is contact signal, please connect 4.7 μ F capacitor between CP signal and 0V.

Note 3: If the input signal is NPN transistor, please connect 2K Ω resistor between CP signal and 12V.

Input/Output Mode Settings



Dimension(mm) and Mounting(45mm*45mm)

