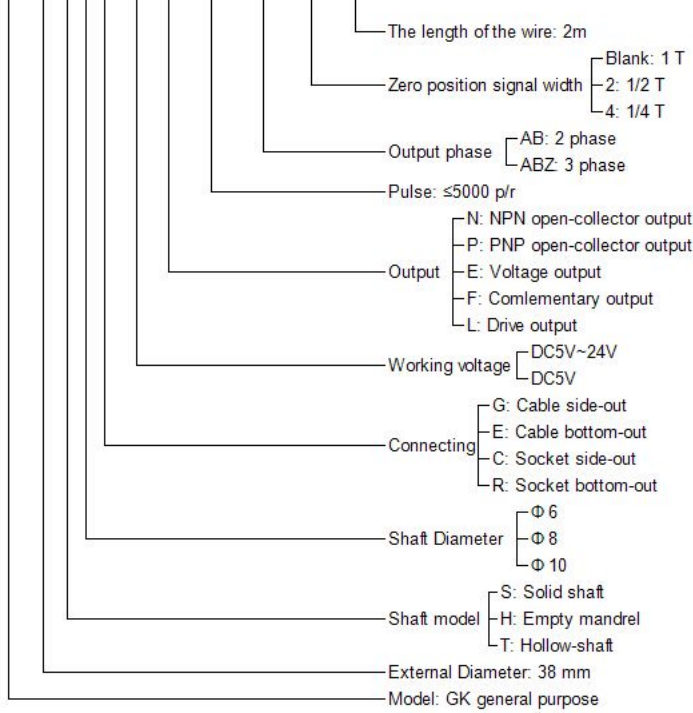


**Model Description**

CHB 38 S 6 G 5-24 E - 200 - ABZ - 1T - 2m



**Electric Specification**

Output	Power voltage	Current consumption	Output voltage		Rise time (ns)	Fall time (ns)	Response frequency (KHz)
			V <sub>H</sub>	V <sub>L</sub>			
E: Voltage output	DC5V±0.2	≤60mA	≥3.5V	≤0.5V	≤500	≤100	0~100
	DC5V~24V		≥V <sub>cc</sub> -2.5V	≤0.5V	≤1500	≤300	0~100
N: NPN open-collector output	DC5V±0.2	≤60mA	-	-	-	-	0~100
	DC5V~24V		-	-	-	-	-
P: PNP open-collector output	DC5V±0.2	≤60mA	-	-	-	-	0~100
	DC5V~24V		-	-	-	-	-
F: Complementary output	DC5V±0.2	≤60mA	≥3.5V	≤0.8V	≤300	≤200	0~100
	DC5V~24V		≥V <sub>cc</sub> -2.5V	≤1.0V	≤500	≤200	0~100
L: Drive output	DC5V±0.2	≤100mA	≥2.5V	≤0.5V	≤200	≤200	0~100
	DC5V~24V		≥V <sub>cc</sub> -2.5V	≤1.0V	≤500	≤200	0~100

**Mechanical Specification**

Allowable Max. rev (rpm)	Starting torque (25°C N.m)	Allowable angular acceleration (rad/s <sup>2</sup> )	Shaft loading		Moment of inertia (kgm <sup>2</sup> )	Weight (kg)
			Radial	Thrust		
5000	1.5×10 <sup>-3</sup>	10000	20	10	4×8 <sup>-8</sup>	0.1

**Ambient Specification**

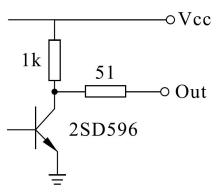
Operating temperature	Storage temperature	Shock resistance	Vibration resistance	Degree of protection
-30°C~+85°C	-35°C~+95°C	980 (3 times and 6ms each in X, Y and Z directions)	50 (10~200Hz, 2 hours each in X, Y and Z directions)	IP54

**Wiring**

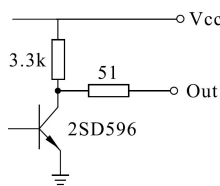
Cable color	White	Black	Red	Green	Yellow	Brown	Gray	Orange	Shielded
Open-collector output	V <sub>cc</sub>	0V	A phase	B phase	Z phase	/	/	/	G
Voltage output	V <sub>cc</sub>	0V	A phase	B phase	Z phase	/	/	/	G
Complementary output	V <sub>cc</sub>	0V	A phase	B phase	Z phase	/	/	/	G
Drive output	V <sub>cc</sub>	0V	A phase	B phase	Z phase	A phase	B phase	Z phase	/

**Wiring Diagram and Dimension(mm)**

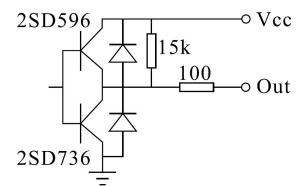
E: Voltage output(V<sub>cc</sub>: 5V)



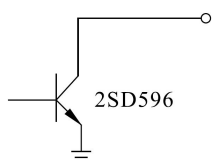
E: Voltage output(V<sub>cc</sub>: 5V-24V)



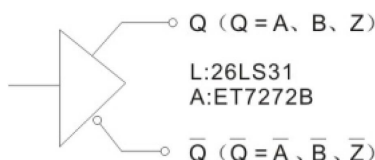
F: Complementary output



N: NPN open-collector output



L: Drive output



**Dimension(mm)**

