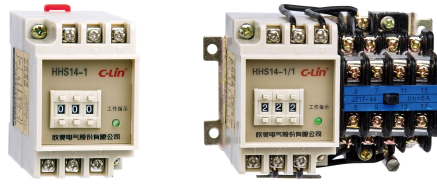


Description

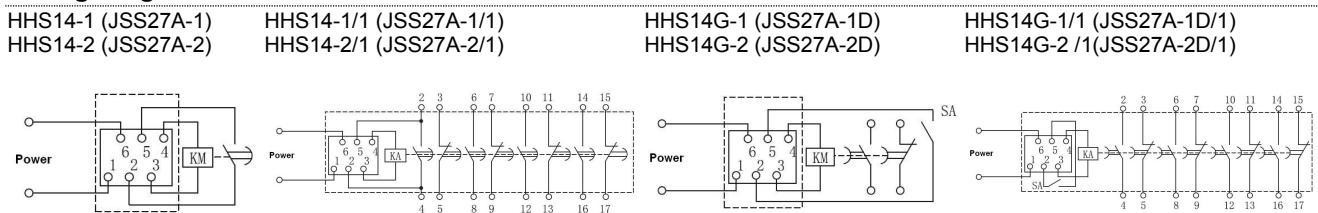
HHS14-□(JSS27A-□), HHS14G-□(JSS27A-□D), HHS14-□/1(JSS27A-□1), HHS14G-□/1(JSS27A-□D/1)



Specification

Model	HHS14-1 (JSS27A-1)	HHS14-2 (JSS27A-2)	HHS14-1/1 (JSS27A-1/1)	HHS14-2/1 (JSS27A-2/1)	HHS14G-1 (JSS27A-1D)	HHS14G-2 (JSS27A-2D)	HHS14G-1/1 (JSS27A-1D/1)	HHS14G-2/1 (JSS27A-2D/1)
Rated Supply Voltage	AC24V, 36V, 110V, 220V, 380V 50Hz, DC24V (Operating voltage fluctuation range: 85% to 110% Ue)							
Operating mode	Pick up time delay				Release time delay			
Time range	0.01s~9.99s	0.1s~99.9s	0.01s~9.99s	0.1s~99.9s	0.01s~9.99s	0.1s~99.9s	0.01s~9.99s	0.1s~99.9s
Repetitive error	The range of time delay > 1s, Er ≤ 1%, the range of time delay < 1s, Dr ≤ 50ms.							
Contact	Solid state switch		3C NO time delay		Solid state switch		4C NO time delay	
Rated Load of the Contact	1A AC220V(Resistive)		5A AC220V(Resistive)		1A AC220V(Resistive)		5A AC220V(Resistive)	
Electrical Life	100000 operations min. (3 A at 250 VAC/30 VDC, resistive load)							
Installation	Surface mounting and 35mm DIN Rail mounting							
Note	/		With AC contactor		/		With AC contactor	

Wiring Diagram

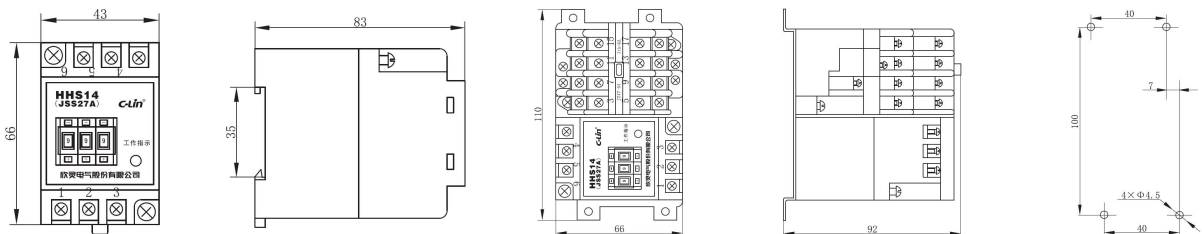


Operation time sequence



Dimension(mm) and Installation(mm)

HHS14-1 (JSS27A-1), HHS14-2 (JSS27A-2), HHS14-1/1 (JSS27A-1/1), HHS14-2/1 (JSS27A-2/1), HHS14G-1/1 (JSS27A-1D/1), HHS14G-1 (JSS27A-1D), HHS14G-2 (JSS27A-2D), HHS14G-2/1 (JSS27A-2D/1)



Application

Samples01

Samples02

