

**Description**

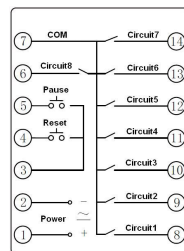
HHS16F



**Specification**

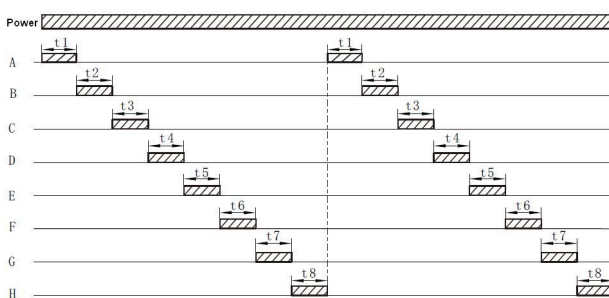
Model	HHS16F
Rated Supply Voltage	AC24V, 36V, 110V, 220V, 380V 50Hz, DC24V (Operating voltage fluctuation range: 85% to 110% Ue)
Operating mode	<p>0: Power on delay(Only 1 period of T1)                      1: Release delay(Only 1 period of T1)                      2: First action with infinite cycle time delay(With 2 period T1 and T2)                      3: First no action with infinite cycle time delay(With 2 period T1 and T2)                      4: First action with finite cycle time delay(With 2 period T1 and T2)                      5: First no action with finite cycle time delay(With 2 period T1 and T2)</p>
Time range	0.01s~9999h
Cycle times	1~9999 times
Adjustable benchmark time	0: 0.01s, 1: 0.1s, 2: 1s, 3: 1m, 4: 1h
Operate start sign	<p>0: Reset                      n: The first count finished of the T1 period of the No. n(n=1~7)                      n.: The first count finished of the T2 period of the No. n(n=1~7)</p>
Contact	8C NO contact
Rated Load of the Contact	Single circuit 3A AC220V(Resistive), the total capacity ≤ 10A AC220V(Resistive)
Electrical Life	100000 operations min. (3 A at 250 VAC/30 VDC, resistive load)
Installation	Flush mounting

**Wiring Diagram**

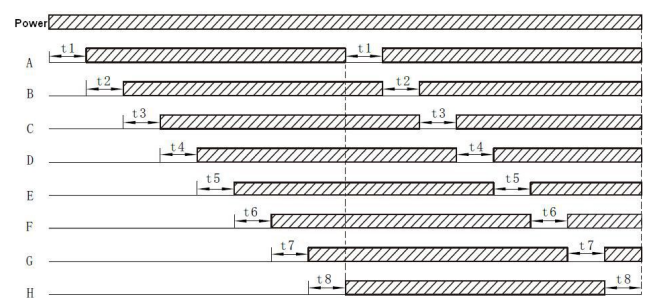


**Operation time sequence**

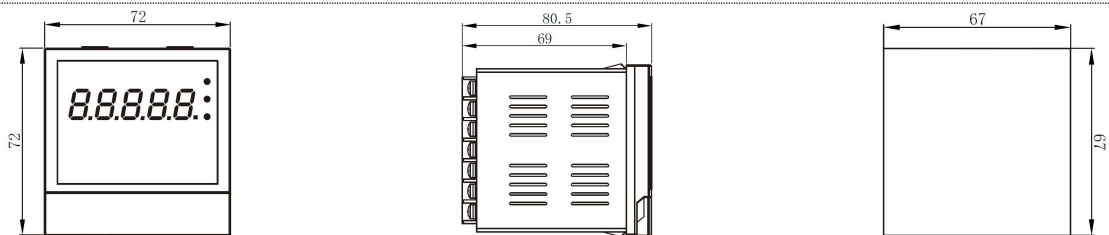
L mode



P mode

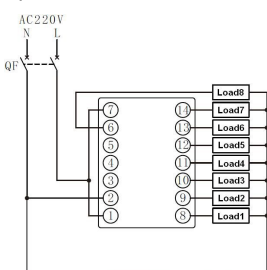


**Dimension(mm) and Installation(mm)**

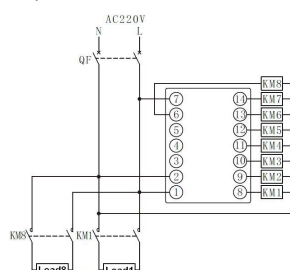


**Application**

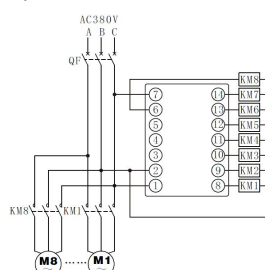
Samples01



Samples02



Samples03



Samples04

